

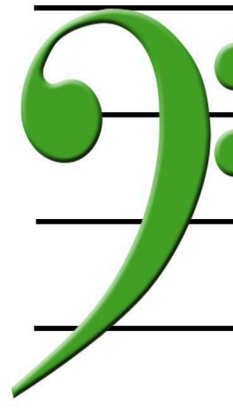


# Shamrock Notes



Upper staff with treble clef and 11 shamrock notes:

- Line 1: 1 note (top line)
- Space 1: 1 note
- Line 2: 1 note
- Space 2: 1 note
- Line 3: 1 note
- Space 3: 1 note
- Line 4: 1 note
- Space 4: 1 note
- Line 5: 1 note



Lower staff with bass clef and 11 shamrock notes:

- Line 1: 1 note (bottom line)
- Space 1: 1 note
- Line 2: 1 note
- Space 2: 1 note
- Line 3: 1 note
- Space 3: 1 note
- Line 4: 1 note
- Space 4: 1 note
- Line 5: 1 note